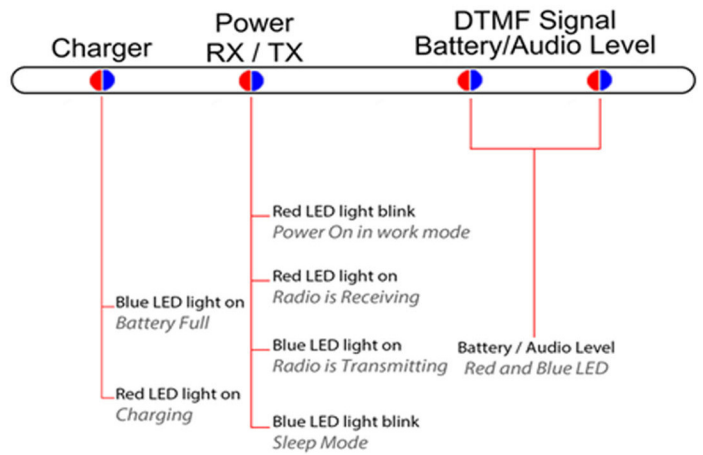




Operating Instructions

Audio Record Simplex Repeater Controller

Model No. **SR-112**



Factory Reset

-Hold the "power on" until 3 LED lighting, hold on 2 Second

Customer Service

- Please contact : www.surecom.com.hk

Quick Installation Guide

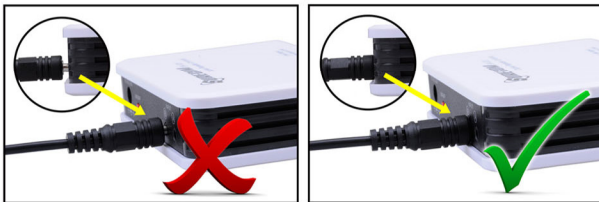
Thanks for purchasing our Duplex Repeater Controller with connector Cable.

Please read this manual carefully before use. The information presented herein will help you to derive maximum performance from your repeater controller.

Packing List

- 1 x SR-112 Radio Record Simplex Repeater Controller
- 1 x 100~240V USB Wall Charger
- 1 x USB Charger power Cable
- 1 x English User's Manual

Correct Connect Cable

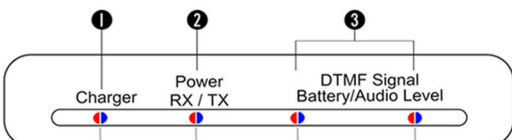


* Please make sure the plug is fully inserted into the socket.

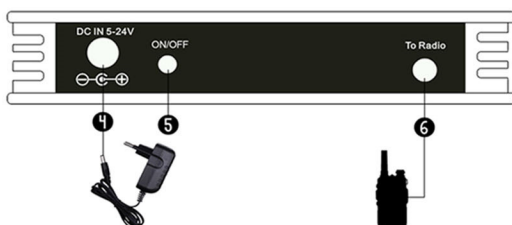
LED Display Instruction



- 1 Charger LED Display
- 2 Power (RX / TX) STATUS
- 3 DTMF Signal STATUS
Battery / Audio Level LED Display
- 4 Charging and DC input
- 5 ON/OFF Switch (Factory Reset)
- 6 Connect Radio (SP/MIC/PTT out)



Charger		Power RX / TX		DTMF Signal		Battery/Audio Level	
LED 1	LED 2	LED 3	LED 4	LED 5	LED 6	LED 7	LED 8
RED	BLUE	RED	BLUE	RED	BLUE	RED	BLUE



Auto send message setting

- Turn ON the power of the radio receiver unit.
- The Status Indicator of the SR-112 will BLINK with RED COLOR
- Push and hold the PTT switch of any radio unit with DTMF function (Besides the radio receiver units installed with the SR-112).

1	(Repeat message once for every 15 minutes.) /
2	(Repeat message once for every 30 minutes.) /
3	(Repeat message once for every 45 minutes.) /
4	(Repeat message once for every 60 minutes.) .

(*The status will blink in blue every 10 secs.)

- Press **# # 6 1 + 0** Disable Repeat Message.

Auto send message Testing

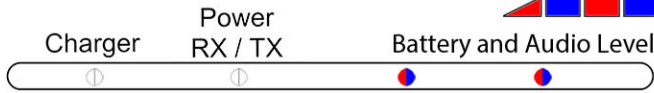
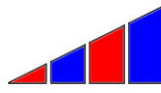
- Press **# # 6 2** for testing your last setup.
(*The status will blink in blue every 10 seconds.)
If you press **##611** before , this function will repeat your message twice within 20 seconds.
If you press **##612** before , this function will repeat your message twice within 40 seconds.
If you press **##613** before , this function will repeat your message twice within 60 seconds
If you press **##614** before , this function will repeat your message twice within 80 seconds

Setup Repeater Messages

- Turn ON the power of the radio receiver unit.
- The Status Indicator of the SR-112 will BLINK with RED COLOR
- Push and hold the PTT switch of any radio unit with DTMF function (Besides the radio receiver units installed with the SR-112).

Keep pressing PPT button to speak message. Record the Message 1: Press # # 8 1 . The maximun record time is 60 seconds. Payback the Message 1: Press # # 8 2 .
Keep pressing PPT button to speak message. Record the Message 2: Press # # 8 3 . The maximun record time is 60 seconds. Payback the Message 2: Press # # 8 4 .
Keep pressing PPT button to speak message. Record the Message 3: Press # # 8 5 . The maximun record time is 30 seconds. Payback the Message 3: Press # # 8 6 .

Level



Battery Level (Table 1)

Description	Battery Level
> 4.0 V	RED BLUE RED BLUE
3.7 - 4.0 V	RED BLUE RED
3.3 - 3.7 V	RED BLUE
3.0 - 3.3 V	RED
< 3.0 V	RED blink

*Battery voltage level Display when Power On.
(Without charger connect.)

Audio in Level (Table 2)

Description	Audio Level
> 1.8 Vrms	RED BLUE RED
> 1.4 Vrms	RED BLUE RED BLUE
> 0.8 Vrms (*The best Audio Level.)	RED BLUE
> 0.2 Vrms	RED
< 0.2 Vrms	

*Audio input level Display for Radio Received.

DTMF Signal Display



Table 3 (* Press # # 0 first, then press another key.)

Description	DTMF Signal
1	RED
2	BLUE
3	RED BLUE
4	RED
5	RED
6	BLUE
7	RED BLUE
8	BLUE
9	RED BLUE
0	BLUE
*	RED BLUE
#	RED BLUE

Setup a new Password

- Turn ON the power of the radio receiver unit.
- Turn ON the power of the SR-112. The Status Indicator of the SR-112 will BLINK with RED COLOR
- Push and hold the PTT switch of any radio unit with DTMF function (Besides the radio receiver units installed with the SR-112.).
- It need 2 steps to Change the Password.

Step 1: (for example)

3 + 8 8 8 8 + 1 2 3 4
(Mode) + (Factory password) + (New password)

Step 2: (for example)

4 + 1 2 3 4
(Mode) + (New password)

SPECIFICATION

Power Supply :	Build-in 3.7V 900mAh Li-Ion Battery (14500)
Charging & External Power Supply :	DC +5V-24V
DTMF Remote Control Protection :	User define 4-digit Password Protection
StandbyTime :	180 hours
Indicators :	Status LED and External Power Supply Input LED
Dimensions :	110 x 80 x 25 mm
Weight :	84g (Body without accessory.)

Normal operation with build-in battery

“ON/OFF”

This switch is used to turn ON/OFF the SR-112.

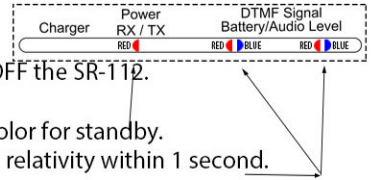
- Power ON

The Power Led Blink with Red color for standby.

Battery Level Leds with indicate relativity within 1 second.

- Power OFF

Push this switch until 3 of RED LED light off.



“To Radio”

This terminal is used to connect a radio transceiver unit.

“DC IN 5-24V”

This indicator is used to indicate the battery charging and external DC input status. (5.5mm plug center pole is DC.)

(This terminal is used to connect an external DC+5-24V power supply.)

Sleeping Mode

- Turn ON the power of the radio receiver unit.

- Push and hold the PTT switch of any radio unit with DTMF function.

Press # # 2 + 8 8 8 8 then turn to Sleeping Mode.
(Mode) (Password)

Working Mode (By Password)

- Turn ON the power of the radio transceiver unit.

- Push and hold the PTT switch of any radio unit with DTMF function.

Press # # 1 + 8 8 8 8 then turn to Working Mode.
(Mode) (Password)

DTMF Remote Control Function

Table 4

Code	Sub-menu
##0	Test DTMF, display DTMF signal(see Table 3)
##1+8888	Enable Record Function(Standby mode) *Factory P/W 8888
##2+8888	Disable Record Function(sleep mode)
##3+8888+1234	Change Password-step 1 of 2
##4+1234	Change Password-step 2 of 2
##51+n	Delay time after release PTT, n=1-9 (unit 0.1second)
##52+n	Delay time after playback, n=1-9 (unit 0.1second)
##53+n	Record level, n=1-9, default value =5
##54+n	Playback level, n=1-9, default value =5
##59+n	n=1 for Enable Roger, n=0 for Disable Roger
##61+n	n=0, Disable Repeat Message n=1, Repeat message ONCE for every 15 minutes n=2, Repeat message ONCE for every 30 minutes n=3, Repeat message ONCE for every 45 minutes n=4, Repeat message ONCE for every 60 minutes (*Status Blue LED blink once within 10 seconds.)
##62 (Repeat message testing)	Repeat Message TWICE within 20secs (for Mode ##611) Repeat Message TWICE within 40secs (for Mode ##612) Repeat Message TWICE within 60secs (for Mode ##613) Repeat Message TWICE within 80secs (for Mode ##614) (*Status Blue LED blink once within 10 seconds.)
##71	Replay last Message
##81	Record Message 1, maximum record time = 60second (After Enter ##81, the voice will record to Message 1)
##82	Playback Message 1
##83	Record Message 2, maximum record time = 60second (After Enter ##83, the voice will record to Message 2)
##84	Playback Message 2
##85	Record Message 3, maximum record time = 30second (After Enter ##85, the voice will record to Message 3)
##86	Playback Message 3